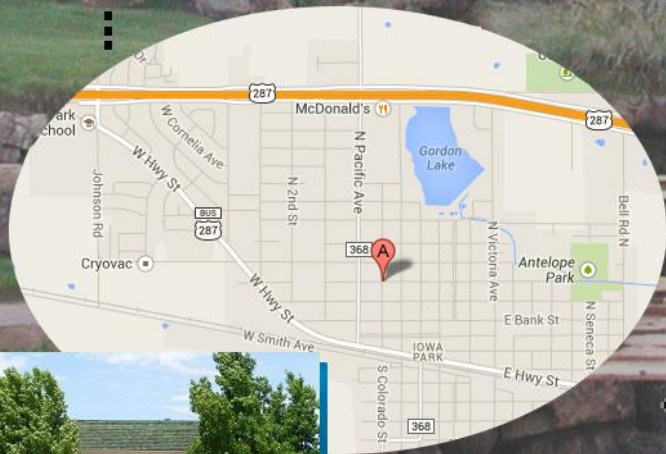
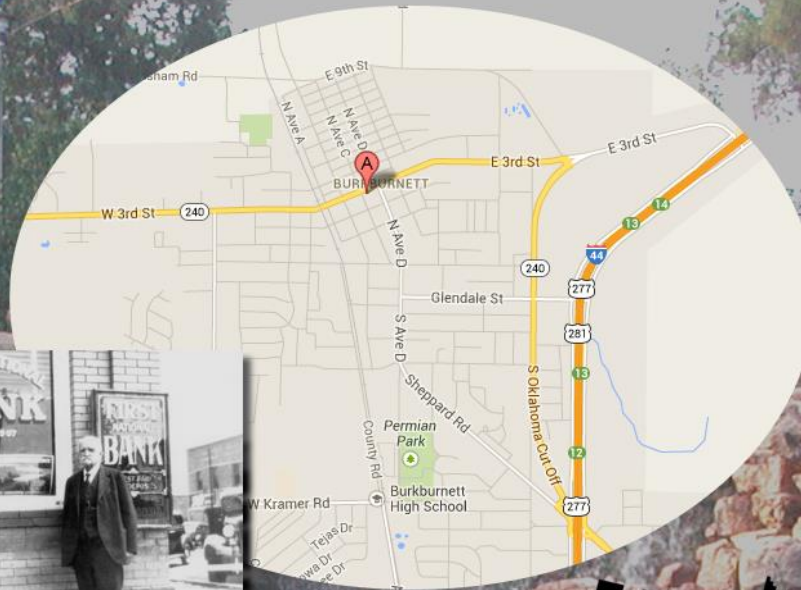
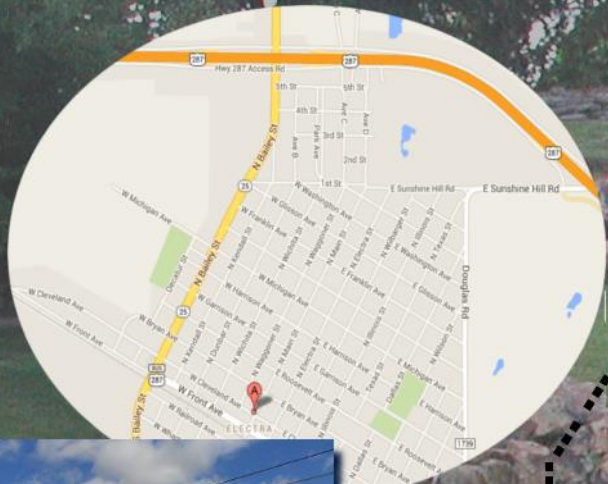


Wichita County Tour Map

# History/Mystery Drive

See reverse for detailed travel directions and fun questions to answer! Bring all FIVE answers to the CVB (at 1000 5th St., inside the MPEC) to receive a FREE t-shirt!



**START At:**

Kell House Museum

900 Bluff Street | Wichita Falls, TX

Q: Who was Frank Kell's brother-in-law?

A: \_\_\_\_\_

**Directions:** From Kell House, Exit the museum lot on to 9th street, turning left on the one-way street. At Broad (at the highway), turn right, and follow signs to enter the 144 freeway to your left. Travel approx. two and a half miles and follow exit 3A to the left (Hwy 287 West). Fun stuff to see on the way...Red River Harley Davidson (exit City View Drive). Exit at Hwy 368/North Pacific Ave. and turn Left onto Hwy 368. Turn left on W. Alameda Street to your destination!

Tom Burnett Library

400 West Alameda Ave | Iowa Park, TX

Q: Tom Burnett was the king of what?

A: \_\_\_\_\_

**Directions:** From Tom Burnett Library, exit to W. Alameda Street, and turn right. Turn right on North Pacific Ave. At Hwy 287, follow the signs for 287 West. Follow the exit for 287 Business (Front Ave.), and continue forward into Electra. Turn right on North Main St. to your destination on the corner of North Main St. and West Cleveland Ave.

Electra City Hall

101 West Cleveland | Electra, TX

Q: What bank originally occupied the building?

A: \_\_\_\_\_

**Directions:** Exit Electra City Hall to West Cleveland Ave. and turn right. Turn right on North Bailey St. (Hwy 25). Continue North from Electra to Hwy 240, turn right. (For an additional adventure, as you near Burk Burnett, turn right on Gulf Lake Road to explore Dickinson Lake.) As you enter Burk Burnett, Hwy 240 becomes East Third Street. First Bank building is located on the corner of East 3rd and North Ave. C.

First Bank

300 E. Third Street | Burk Burnett, TX

Q: Who was one of the original depositors of the bank?

A: \_\_\_\_\_

**Directions:** Exit First Bank on to East 3rd street (turn left). Follow East 3rd St. until it intersects with Hwy 277/144. (Before entering the highway, check out the Oil Boom historical site!) Turn right to enter 144 South to Wichita Falls. As you enter downtown, follow Exit 1. Turn left on 8th street and arrive at your destination the Iron Horse Pub...enjoy your meal!

Finish at:

Iron Horse Pub

615 8<sup>th</sup> Street | Wichita Falls, TX

Q: Who was John O'Donohoe married to?

A: \_\_\_\_\_